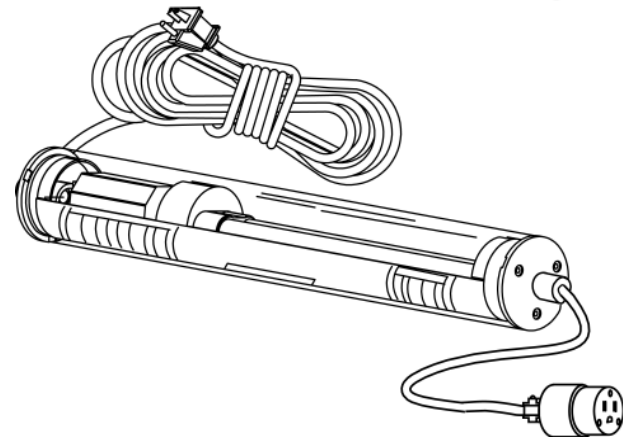
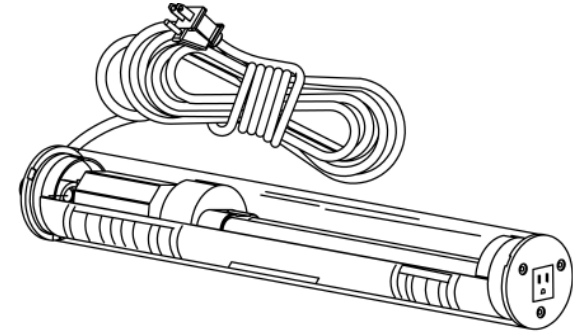


NOTES



**WARRANTY AND
INSTRUCTION MANUAL
FOR 36 WATT 120V PLL
INDUSTRIAL
STRING LITE**

WARNING: When using outdoor use portable luminaires, basic safety precautions should always be followed to reduce the risk of fire, electric shock, and personal injury, including the following:

- (a) Use only three-wire outdoor extension cords that have three-prong grounding plugs and grounding receptacles that accept the appliance's plug.
- (b) Ground Fault Circuit Interrupter (GFCI) protection is to be provided on the circuit(s) or outlet(s) to be used for the wet location portable luminaire. Receptacles are available having built-in GFCI protection and are able to be used for this measure of safety.
- (c) Use only with an extension cord for outdoor use, such as an extension cord of cord type SW, SW-A, SOW, SOW-A, STW, STW-A, STOW, STOW-A, SJW, SJW-A, SJOW, SJOW-A, SJTW, SJTW-A, OR SJTOW, SJTOW-A.

Read All Instructions

One Year Warranty

This new light was thoroughly tested and inspected and found to be in perfect working order before leaving our factory. If within one year from the date of purchase, any part of this worklight proves to be defective in material or workmanship, such defective part will be repaired or replaced (company option) free of charge, at our factory. General Manufacturing, Inc.'s liability in all events is limited to the purchase price paid.

The warranty does not apply to the fluorescent lamp nor does it apply to damage, alteration, misuse or abuse not attributed to General Manufacturing, Inc., its representatives, dealers or their employees. This warranty does not apply if the product is mishandled or operated at a voltage exceeding that shown on the product.

General Manufacturing, Inc. has made a diligent effort to illustrate and describe the products in its literature accurately, however such illustrations and descriptions are for the sole purpose of identification and do not express or imply a warranty that the products will necessarily conform to the illustrations or descriptions.

When returning product for warranty repair, please provide: a brief description of your problem and your return address.

GENERAL MANUFACTURING, INC.

1100 S. MORGAN ST.
BLUFFTON, IN 46714
PHONE: (260) 824-3440
FAX: (260) 824-3448

Care & Operation of your New 36W 120V PLL Industrial String Lite

CAUTION

1. Inspect cord regularly for damage and replace if necessary for user safety.
2. Do not submerge fixture in liquids.
3. Do not use in areas requiring explosion-proof fixtures.
4. Disconnect light from power source before relamping.
5. Do not hang fixture by electrical cord. Use manufacturer's hooks or mounting brackets.
6. Take care not to bend or drop fixture - damage may result to lamp.
7. Power supply cord is UL listed and meets OSHA requirements for grounding of hand held tools.

OPERATION & MAINTENANCE

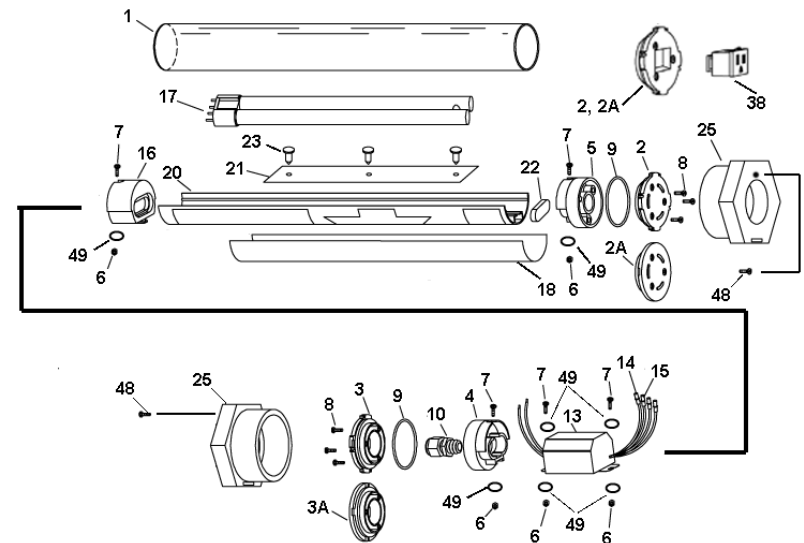
1. Plug the unit into a 120 VAC outlet. The power supply cord is UL listed and meets OSHA standards.
2. Disconnect the power supply before servicing.
3. Keep the unit free from grease and dirt by using a damp cloth with mild detergent or waterless hand cleaner.
4. Do not use solvents such as gasoline to clean unit or cord as it makes the parts brittle.

RELAMPING INSTRUCTIONS

Note: for relamping instructions, refer to label located inside the outer tube of the fixture. Note: When ordering replacement parts, please furnish light model number located on label of light.

Note: We recommend you use **ONLY** original replacement parts.

Parts - 36W 120V PLL Industrial String Lite



Parts List - 36W 120V PLL Industrial String Lite

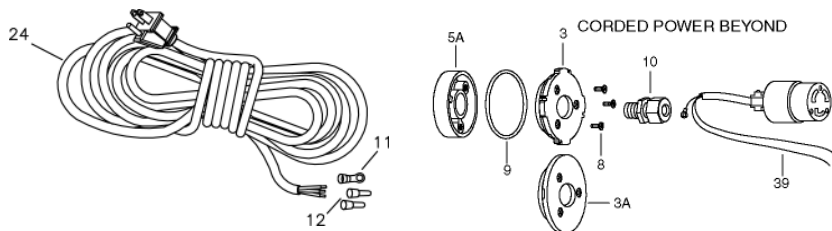
Item	Part No.	Description	Item	Part No.	Description
1	5000-0223	Outer tube tough shield	25	5000-0275	End cap, yellow
	5000-0589	Outer tube chem shield	26	N/A	
	5000-0558	Outer tube chip shield (glass) includes 2 rubber spacers	27	5000-0276	Switch housing
*2	5000-0886	Endplug, locking, (tool tap)	28	5000-0277	Switch plate, 2 pc
2A	5000-0594	Endplug, (tool tap)	29	5000-0278	Switch, on/off
*3	5000-0295	Endplug, cord, locking, pwr beyond	30	5000-0563	Switch, rubber boot
3A	5000-0231	Endplug, cord & power beyond	31	5000-0280	Mounting bracket
4	5000-0232	Innerplug, cord		5000-1175	Mounting bracket - chip shield
5	5000-0595	Innerplug, FM & cord power beyond	32	5000-0282	Plastic hook
5A	5000-0592	Innerplug, corded power beyond	33	5000-0283	Spacer, hook bracket
6	5000-0234	10-24 hex nut	34	5000-0284	Clamp hook bracket
7	5000-0235	10-24 x 1/2" pan head screw	35	5000-0285	10 x 24 x 1 1/4 SS mach screw
8	5000-1265	10-32 x 1-1/4" SS pan head screw	36	5000-0286	10-24 SS hex nut
9	5000-0237	O-ring 1-7/8" ID	37	5000-0289	Hook bracket
10	5000-0238	Strain relief	38	5000-0593	"Pwr beyond" receptacle
11	5000-0239	Ring terminal #10 stud	39	5000-6116	1' 16/3 "Power beyond", yellow
12	5000-0240	Closed end connector		5000-6235	1' 16/3 "Power beyond", black
13	5166-3675	Ballast LE136R120NPF	41	5000-0291	Pop rivet
14	5000-0244	Sleeve terminal	42	5000-1049	82 lb. Magnet
15	5000-0245	Terminal, lamp pin		5000-1047	110 lb. Magnet
16	5000-0246	Socket - PLL lamp	43	5000-0292	Washer, #10
17	5000-2079	Lamp, PLL 36 watt	44	5000-1077	Magnet mount 82 lb., assy. **
18	5000-1003	Plastic reflector		5000-1078	Magnet mount 110 lb., assy. **
19	not req'd		45	5000-1223	Inline switch & housing assy. **
20	5000-0251	Aluminum backbone (w/labels)	46	5000-1055	Vertical hook assy. **
21	5000-0254	Aluminum reflector, white	47	5000-1056	Horizontal hook assembly **
22	5000-0256	Lamp, cushion - PLL	48	5000-0748	End cap locking screw
23	5000-0257	Retainer button, reflector	49	5000-1156	#10 Star washer
24	5000-6020	25' 16/3 cordset, yellow	50	5000-1062	Bracket Assy. for plastic tubes
	5000-6015	25' 16/3 cordset, black	51	5000-1088	Bracket Assy. for glass tubes
			52	5000-1125	Hook Assy. #2, horizontal
			53	5000-1293	6-32 x 3/4 ss mach. Screw
			54	5000-1294	10-24 x 1 ss mach. Screw
			55	5000-1295	6-32 ss hex locknut
			56	5000-1296	Hook bracket #2

Note: other lengths are available for item #24

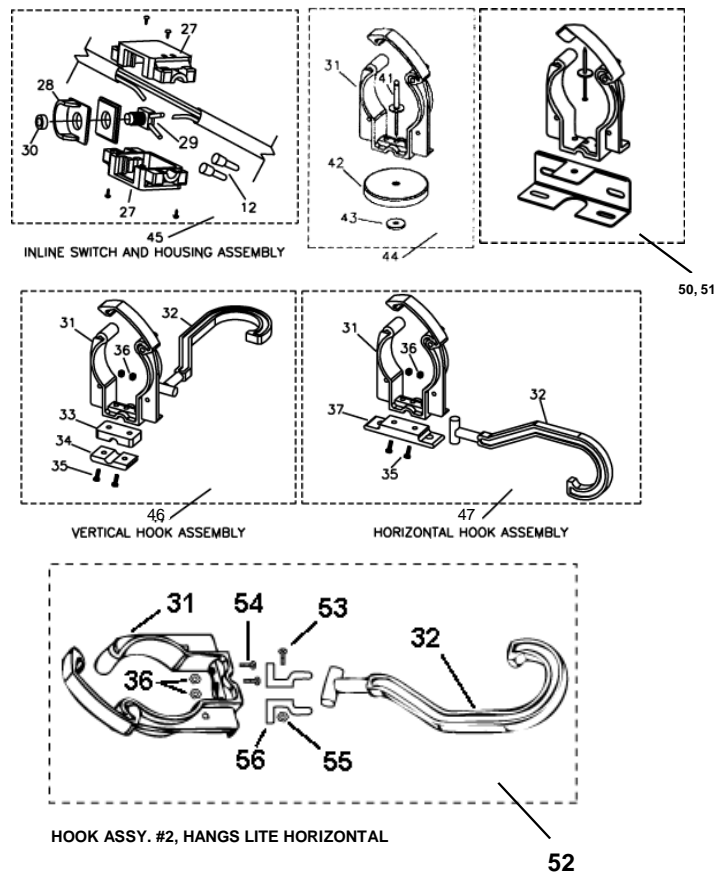
*To be used with item #25 & 26

** Options (see diagrams on page 5)

Parts - 36W 120V PLL Industrial String Lite



36W 120V PLL String Lite Parts - Options



Discontinued Parts for Models with 120V LA155P120HP Ballast

Item No.	Part No.	Description
1	5000-1399	Outer tube tough shield
	5000-1400	Outer tube Chem Shield
	5000-1401	Outer tube chip shield (glass)
13	5166-3664	120V LA155P120HP ballast
19	5000-1402	Aluminum backbone with labels