

CAUTION, IMPORTANT SAFETY INSTRUCTIONS: This portable lamp has a polarized plug (one blade is wider than the other) as a feature to reduce the risk of electric shock. This plug will fit in a polarized outlet only one way. If the plug does not fit fully in the outlet, reverse the plug. If it still does not fit, contact a qualified electrician. Never use an extension cord unless plug can be fully inserted. Do not alter the plug.

ATTENTION, INSTRUCTIONS IMPORTANTES DE SECURITE: Cette lampe portative a une fiche polarisante (une lame est plus grande que l'autre) comme caractéristique pour réduire le risque de choc électrique cette fiche n'engage qu'une prise polarisante. Si la fiche n'engage pas complètement la prise, alors renverser la, si elle n'engage toujours pas, mettez-vous en rapport avec un électricien qualifié. Ne jamais utiliser avec un prolongateur si la fiche n'engage pas complètement. Ne changer pas la fiche.

1 Year Warranty

The Manufacturer warrants to the purchaser of this new light that it was thoroughly tested and inspected and found to be in perfect working order before leaving our factory. If within 1 year from the date of purchase, any part of this worklight proves to be defective in material or workmanship, such defective part will be repaired or replaced (company option) free of charge, at our factory. The company's liability in all events is limited to the purchase price paid.

The warranty does not apply to damage, alteration, misuse or abuse not attributed to the Manufacturer, its representatives, dealers or their employees. This warranty does not apply if the product is mishandled or operated at a voltage exceeding that shown on the product.

The Manufacturer has made a diligent effort to illustrate and describe the products in its literature accurately, however such illustrations and descriptions are for the sole purpose of identification and do not express or imply a warranty that the products will necessarily conform to the illustrations or descriptions.

KEEP THIS MANUAL

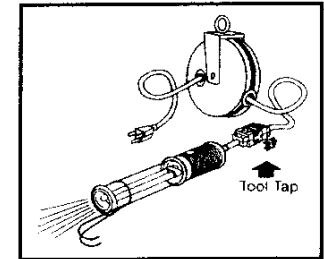
If this Worklight malfunctions or is in need of repairs, send to:

CUSTOMER SERVICE DEPARTMENT
1100 S. MORGAN ST.
BLUFFTON, IN 46714
PHONE: (260) 824-3440

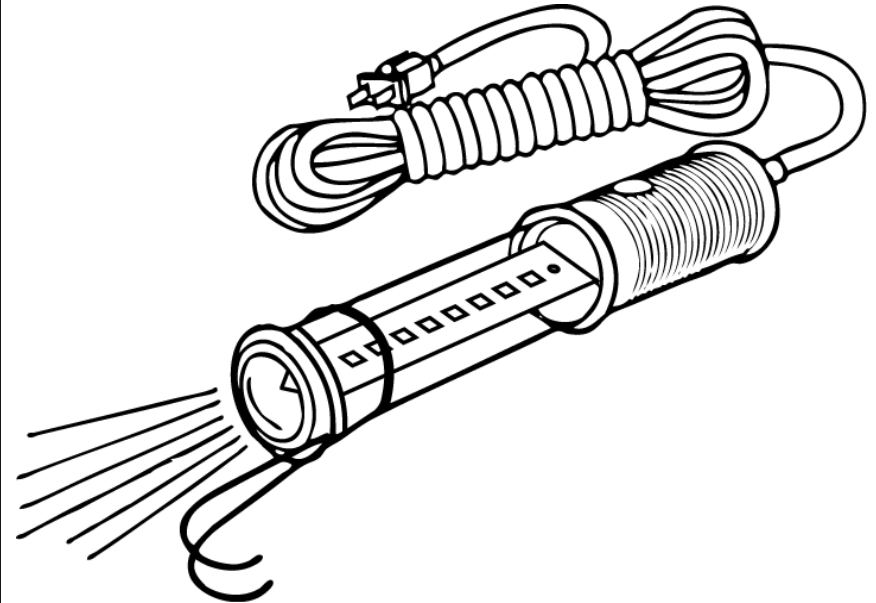
FORM # 9032-7292 (02/10)

SAFETY LINE
By General Mfg., Inc.

Available with Scratch
And Chemical Resistant
Outer Tube.



Tool Tap Models Available



STUBBY II[®] LED

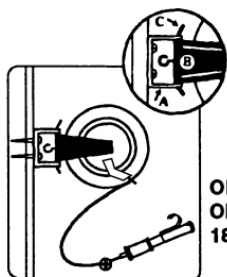
Warranty & Instruction Manual

Care & Operation of your New Stubby II LED Worklight

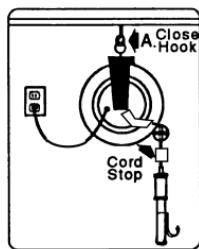
CAUTION

1. Inspect cord regularly for damage and replace if necessary for user safety.
2. Do not submerge in liquids.
3. When hanging reel models on ceiling:
 - By Hook: Close hook with pliers to prevent reel from coming down.
 - By Bracket Pin: With reel in place, bend end of "L" shaped pin to prevent pin from falling out.
 - Read mounting instructions carefully before installing.
4. Caution—Risk of Electrical Shock—Use in Dry Locations Only.
5. Tool Tap Models:
 - Do not exceed Tool Tap amperage rating of 12 amps (16 AWG).
 - Pull cord all the way out of reel when using the tool tap.

MOUNTING INSTRUCTIONS FOR MODELS with REEL



**OPTIONAL WALL OR CEILING MOUNT
180° ROTATION**



**INSTALLATION
CEILING MOUNT
360° ROTATION**

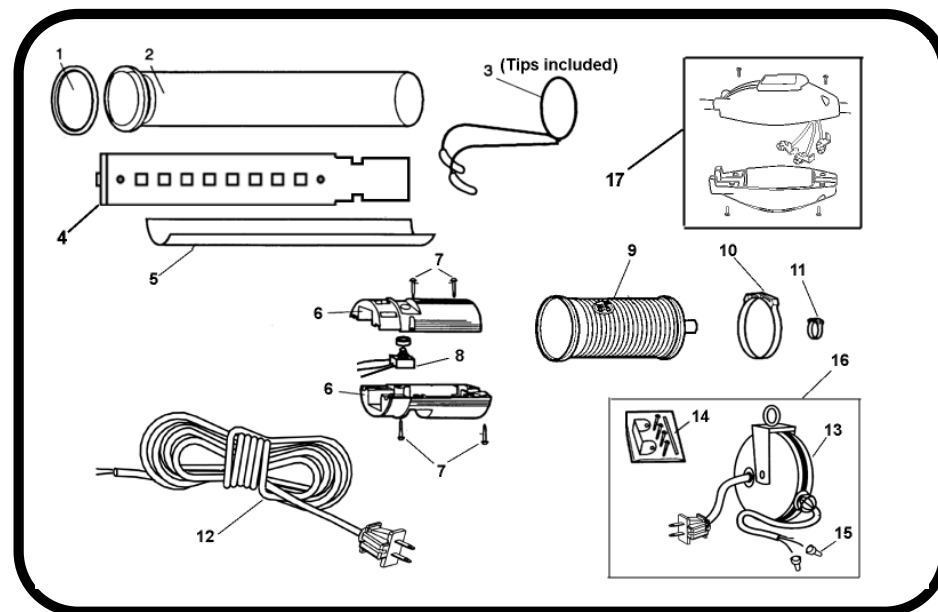
- | | |
|---------------------------------------------------------------------------------------------------------------------------------------------------------------------------------------------------------------------------------------------------------------------------------------------------------------------------------------------------------------------------------------------------------------------------------------------|-------------------------------------------------------------------------------------------------------------------------------------------------------------------------------------------------------------------------------------------------------------------------------------------------------------------------------------------------------------------------------------------------|
| <ol style="list-style-type: none"> 1. Select location within 2 feet of an electrical outlet. 2. Take U shaped Bracket "A" and attach to solid part of the wall or ceiling with screws provided. 3. Place Hanger Bracket "B" inside U shaped Bracket "A" lining up small holes in the Brackets. 4. Insert Locking Pin "C" through lined-up holes. Be sure to bend the end of locking pin as shown. | <ol style="list-style-type: none"> 1. Select location within 2 feet of an electrical outlet. 2. Screw the hanger Hook securely into the ceiling. 3. Hang Reel on Hook. 4. Close Hook with pliers to prevent Reel from Coming off. Refer to point "A". 5. Adjust Cord Stop so light or outlet hangs at Desired length when cord is retracted. |
|---------------------------------------------------------------------------------------------------------------------------------------------------------------------------------------------------------------------------------------------------------------------------------------------------------------------------------------------------------------------------------------------------------------------------------------------|-------------------------------------------------------------------------------------------------------------------------------------------------------------------------------------------------------------------------------------------------------------------------------------------------------------------------------------------------------------------------------------------------|

OPERATION & MAINTENANCE

1. Plug the unit into a 120 volt AC outlet. The power supply cord is UL listed and meets OSHA standards for grounding of hand held tool.
2. Disconnect the power supply before servicing the light.
3. Keep the unit free from grease and dirt by using a damp cloth with mild detergent, or waterless hand cleaners. This removes dirt from scratches in outer tube and will provide the best output at all times. If tube is damaged or badly scratched, it is easily replaced and is available as a replacement part.
4. Do not use solvents such as gasoline to clean unit or cord as it makes the parts brittle. Do not allow brake fluid to contact outer tube as it will cause permanent damage.

Item	Part No.	Description
------	----------	-------------

1	5000-0733	Bumper ring
2	5000-1371	Outer tube assy, Polycarbonate (includes items 1 & 5)
2	5000-1372	Outer tube assy, X-Treme Shield (includes items 1 & 5)
3	5000-0760	Twin spring steel hook w/tips
4	5000-1373	LED board w/end lite and heat sink
4	5000-1374	LED board less end lite with heat sink
5	5000-1375	Reflector, Polycarbonate
5	5000-1376	Reflector, X-Treme Shield



Item	Part No.	Description
------	----------	-------------

6	5000-0415	Handle 18/2 SVT cord (includes item 7)
6	5000-0416	Handle 18/2 SJTOW cord (includes item 7)
6	5000-0425	Handle 16/3 SJTOW cord (includes item 7)
7	5000-0213	Screw
8	5000-1187	Switch for LED board w/end lite (includes three of item 15)
8	5000-0477	Switch for LED board w/o end lite (includes two of item 15)
9	5000-0104	End cap, small black (18/2 SVT)
9	5000-0103	End cap, medium black (18/2 SJTOW)
9	5000-0741	End cap, large black (16/3 SJTOW)
10	5000-0479	Watertite clamp, large
11	5000-0480	Watertite clamp, small
12	5000-6300	Cord assembly, 1' 16/3 SJTOW yellow
12	5000-6082	Cord assembly, 25' 18/2 SJTOW yellow
12	5000-6084	Cord assembly, 25' 16/3 SJTOW yellow
12	5000-6085	Cord assembly, 50' 18/2 SJTOW yellow
12	5000-6087	Cord assembly, 50' 16/3 SJTOW black
13	5000-6302	40' 18/2 SJTOW Reel cord assembly, yellow (includes item 15)
13	5000-6281	40' 16/3 SJTOW Reel cord assembly, yellow (includes item 15)
13	5000-6303	50' 18/2 SVT Reel cord assembly, black (includes item 15)
14	5000-0775	Mounting hardware, 40 & 50' reels
15	5000-0754	Closed end connector, insulated
16	5000-6304	40' 18/2 SJTOW Reel assembly with mounting hardware
16	5000-6305	40' 16/3 SJTOW Reel assembly with mounting hardware
16	5000-6160	50' 18/2 SVT Reel assembly with mounting hardware
17	5000-1368	In-line Tool Tap assy