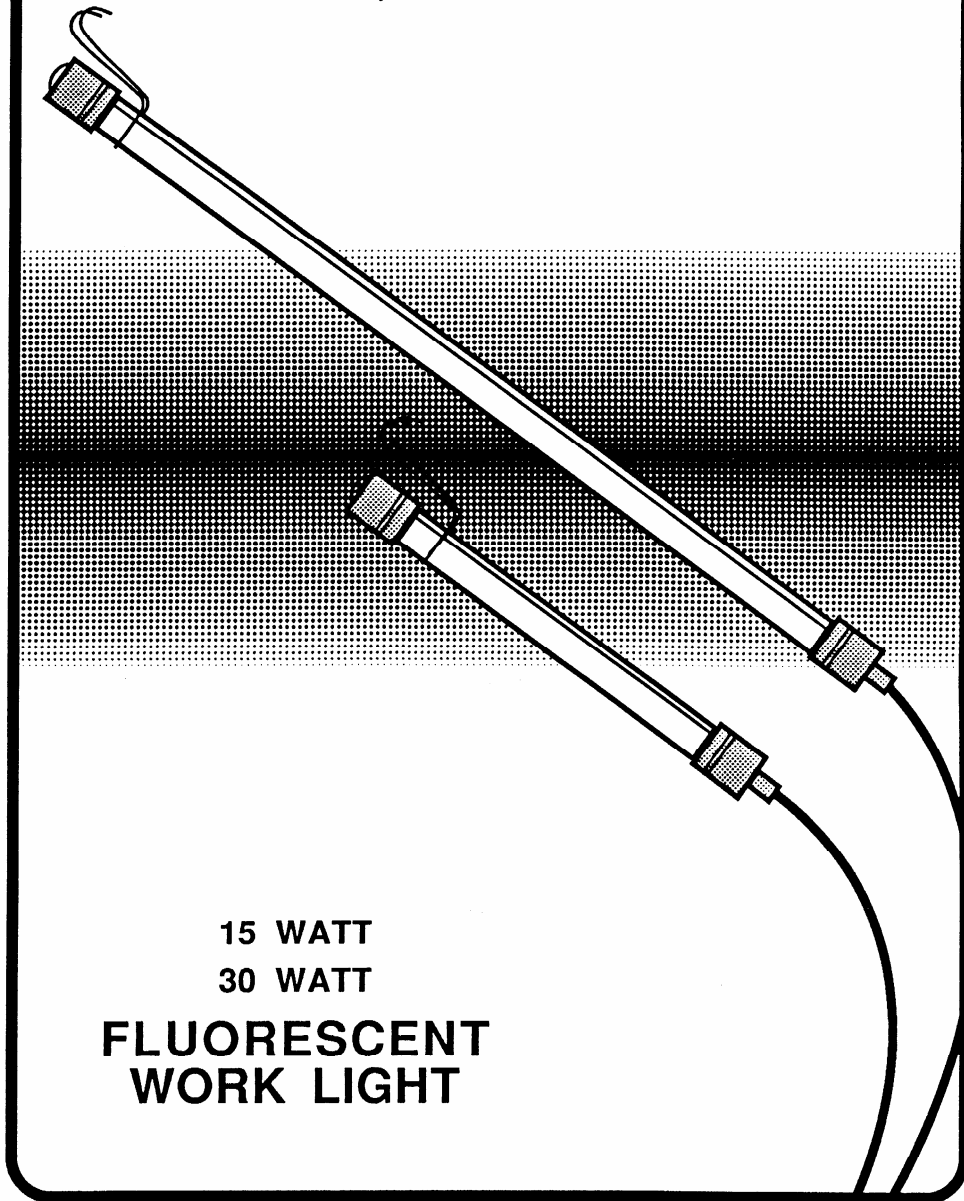


SAF/LITE

by General Manufacturing, Inc.



15 WATT
30 WATT
**FLUORESCENT
WORK LIGHT**

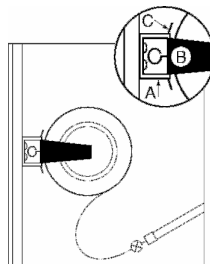
**Warranty & Instruction Manual
for 15 and 30 watt models**

Care & Operation of your New Saf-T-Lite® Fluorescent Worklight

CAUTION

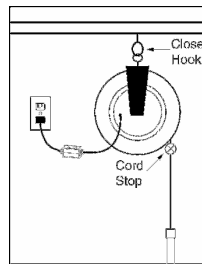
1. Do not use your worklight in hazardous areas under UL specifications 335.
2. Inspect cord regularly for damage and replace if necessary for user safety.
3. Do not submerge.
4. When hanging reel on ceiling:
 - By Hook: Close hook with pliers to prevent reel from coming down.
 - By Bracket Pin: With reel in place, bend end of "L" shaped pin to prevent pin falling out.
 - Read mounting instructions carefully before installing.
5. Use in covered areas out of rain and weather.

MOUNTING INSTRUCTIONS FOR MODELS with REEL



**OPTIONAL WALL
OR CEILING
MOUNT**

1. Select location within 2 feet of an electrical outlet.
2. Take U shaped Bracket "A" and attach to solid part of the wall or ceiling with the screws provided.
3. Place Hanger Bracket "B" inside U shaped Bracket "A" lining up small holes in the Brackets.
4. Insert Locking Pin "C" through lined-up holes. Be sure to bend the end of locking pin "C" shown.



**INSTALLATION
CEILING MOUNT
360° ROTATION**

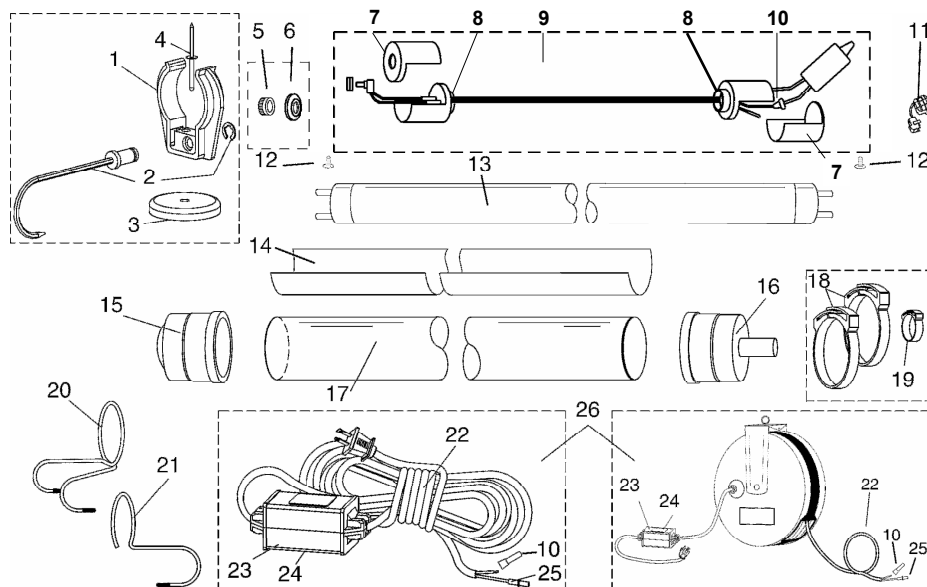
1. Select location within 2 feet of an electrical outlet.
2. Screw the Hanger Hook securely into the ceiling.
3. Hang Reel on Hook.
4. Close Hook with pliers to prevent Reel from coming off. Refer to point "A".
5. Adjust Cord Stop so light or outlet hangs at desired length when cord is retracted.

OPERATION & MAINTENANCE

1. Plug the unit into a 120 volt AC outlet. The Saf-T-Lite® power supply cord is UL listed and meets OSHA standards.
2. To start, depress domed end cap at end of worklight. When lamp glows at each end, release dome. To turn off depress dome and release.
3. Disconnect the power supply before servicing.
4. Keep the unit free from grease and dirt by using a damp cloth with mild detergent, or waterless hand cleaners. This removes dirt from scratches in outer tube and will provide the best light output at all times. If tube is damaged or badly scratched, it is easily replaced and is available as a replacement part.
5. Do not use solvents such as gasoline to clean unit or cord as it makes the parts brittle. Do not allow brake fluid to contact outer tube as it will cause permanent damage.

LAMP SPECIFICATIONS

- 15 Watt (F15T8) 2" dia. x 22" long unit puts out 870 lumens total light which is equivalent to a 75 watt incandescent but will last up to 7 times longer.
- 30 Watt (F30T8) 2" dia. x 40" long unit puts out 2200 lumens total light which is equivalent to a 150 watt incandescent but will last up to 7 times longer. Ballast has a cut out switch to protect against over heating. Two impact rings support lamp inside clear tube.



SAF-T-LITE® Parts List		Part Number & Quantity Required			
Item	Description	15 Watt	Qty Req.	30 Watt	Qty Req.
1	"M" Grip (less magnet)	5000-0040	2	5000-0040	2
2	Hook Assembly (with clip)	5000-0471	2	5000-0471	2
3	Magnet, 58#	5000-1065	2	5000-1065	2
4	Pop Rivet	5000-0470	2	5000-0470	2
5	Switch Thumb Nut	5000-0398	1	5000-0398	1
6	Plastic Switch Washer	5000-0399	1	5000-0399	1
7	Switch & Cord Cap (LH1)	5000-0674	2	5000-0674	2
8	Lampholder (LH2)	5000-0675	2	5000-0675	2
9	Switch Harness Assembly w/ Starter	5000-0553	1	5000-0440	1
10	Closed End Insulated Connector	5000-0400	3	5000-0400	3
11	Strain Relief	5000-0403	1	5000-0403	1
12	Screw	5000-0402	2	5000-0402	2
13	Lamp	5000-2004	1	5000-2006	1
14	Reflector	5000-0676	1	5000-0677	1
15	End Cap Switch End - Yellow	5000-0462	1	5000-0462	1
	End Cap Switch End - Black	5000-0463	1	5000-0463	1
16	End Cap Cord End - Yellow	5000-0408	1	5000-0408	1
	End Cap Cord End - Black	5000-0464	1	5000-0464	1
17	Outer Tube	5000-0678	1	5000-0679	1
18	Large Vapor Clamp (Optional)	5000-0466	2	5000-0466	2
19	Small Vapor Clamp (Optional)	5000-0467	1	5000-0467	1
20	Hanger, Spring Steel, Twin - Yellow Tips	5000-0460	1	5000-0460	1
	Hanger, Spring Steel, Twin - Black Tips	5000-0461	1	5000-0461	1
21	Hanger, Steel, Single - Yellow Tips	5000-0409	1	5000-0409	1
	Hanger, Steel, Single - Black Tips	5000-0468	1	5000-0468	1
22	Cord 25' Yellow (includes 10, 22, 25)	5000-6141	1	5000-6141	1
	Cord 25' Black (includes 10, 22, 25)	5000-6142	1	5000-6142	1
	Cord 50' Yellow (includes 10, 22, 25)	5000-6135	1	5000-6135	1
	Cord 50' Black (includes 10, 22, 25)	5000-6136	1	5000-6136	1
	Reel Cord 40' Yellow (includes 10, 22, 25)	5000-6103	1	---	---
23	Ballast	5166-3562	1	5166-3573	1
24	Ballast Box & Lid - Yellow	5166-3544	1	5166-3574	1
	Ballast Box & Lid - Black	5000-0119	1	5166-3575	1
25	Pin Terminal, Female	5000-0050	4	5000-0050	4
26	Cord 25' Assembly - Yellow	5000-6144	1	5000-6007	1
	Cord 25' Assembly - Black	5000-6061	1	5000-6062	1
	Cord 50' Assembly - Yellow	5000-6145	1	5000-6149	1
	Cord 50' Assembly - Black	5000-6146	1	5000-6150	1
	Reel 40' Assembly - Yellow	5000-6148	1	---	---

Relamping

1. Disconnect the unit from its power source (unplug).
2. Remove end cap from switch end of unit.
3. Slide end cap on cord end of unit down about 6".
4. Remove the screw showing at each end of worklight.
5. The lamp assembly can now be removed from the outer tube.
6. Replace lamp making sure that the pins at each end of the lamp are plugged into the terminals correctly.
7. To install assembly reverse above steps.

90 Day Warranty

General Manufacturing, Inc. warrants to the purchaser of this new Saf-T-Lite® that it was thoroughly tested and inspected and found to be in perfect working order before leaving our factory. If within 90 days from the date of purchase, any part of this Saf-T-Lite® proves to be defective in material or workmanship, such defective part will be repaired or replaced (company option) free of charge. The company's liability in all events is limited to the purchase price paid.

The warranty does not apply to the fluorescent lamp nor does it apply to damage, alteration, misuse or abuse not attributed to General Manufacturing, Inc., its representatives, dealers or their employees. This warranty does not apply if the product is mishandled or operated at a voltage exceeding that shown on the reflector. This warranty pertains to any Saf-T-Lite® that may be termed by manufacturers, as a service unit.

General Manufacturing, Inc. has made a diligent effort to illustrate and describe the products in its literature accurately, however such illustrations and descriptions are for the sole purpose of identification and do not express or imply a warranty that the products will necessarily conform to the illustrations or descriptions.

When returning product for warranty repair, please provide: from whom purchased, date of purchase, and attach receipt or give invoice number.

KEEP THIS MANUAL

If this Saf-T-Lite® malfunctions or is in need of repairs, send to:

GENERAL MANUFACTURING, INC.

1100 South Morgan Street

Bluffton, IN 46714

Phone: 260-824-3440 Fax: 260-824-3448

Website: www.saftlite.com

Email: sales@saftlite.com

DO NOT return to place of purchase, they are not authorized to accept used or damaged units.